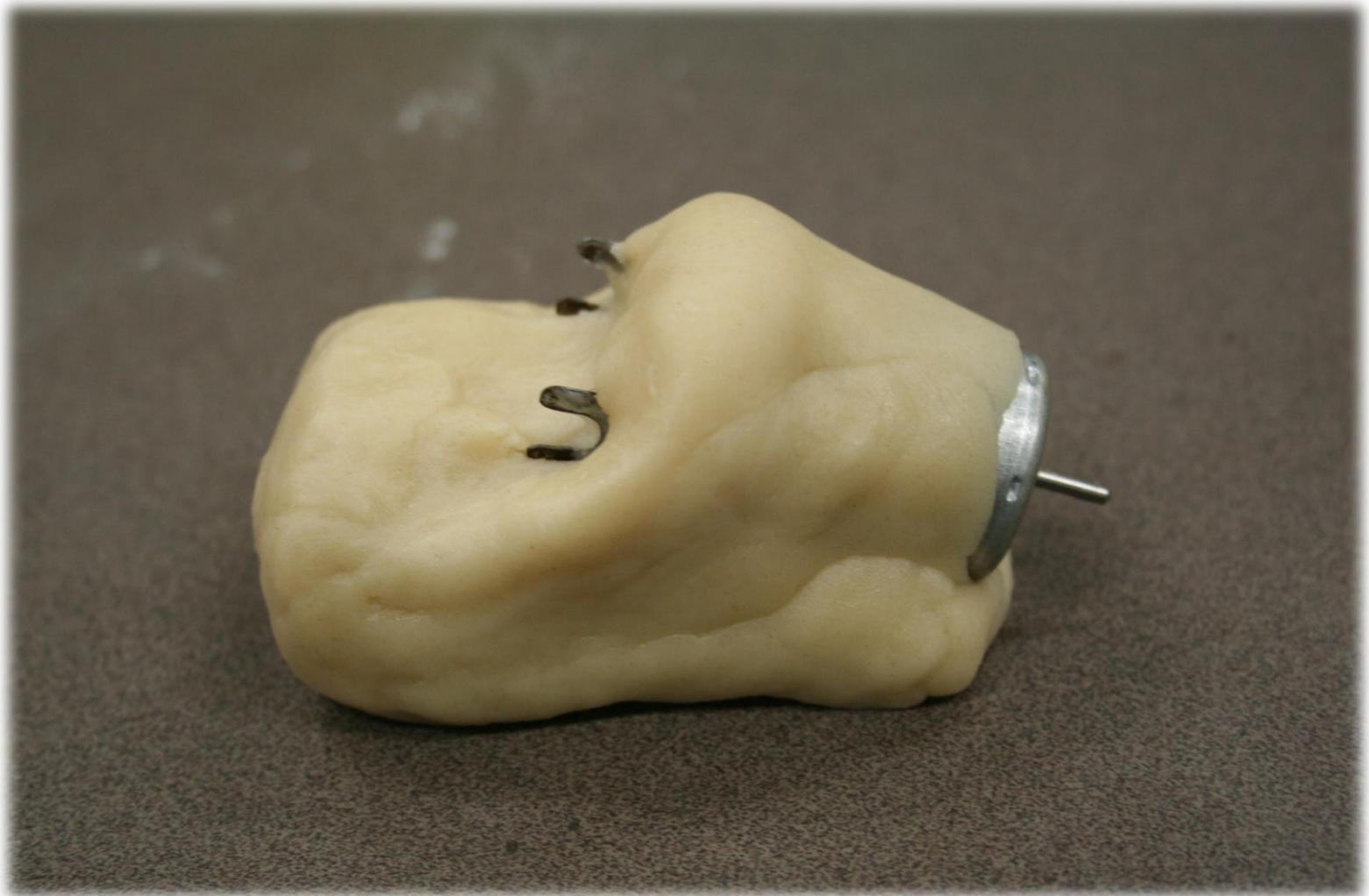


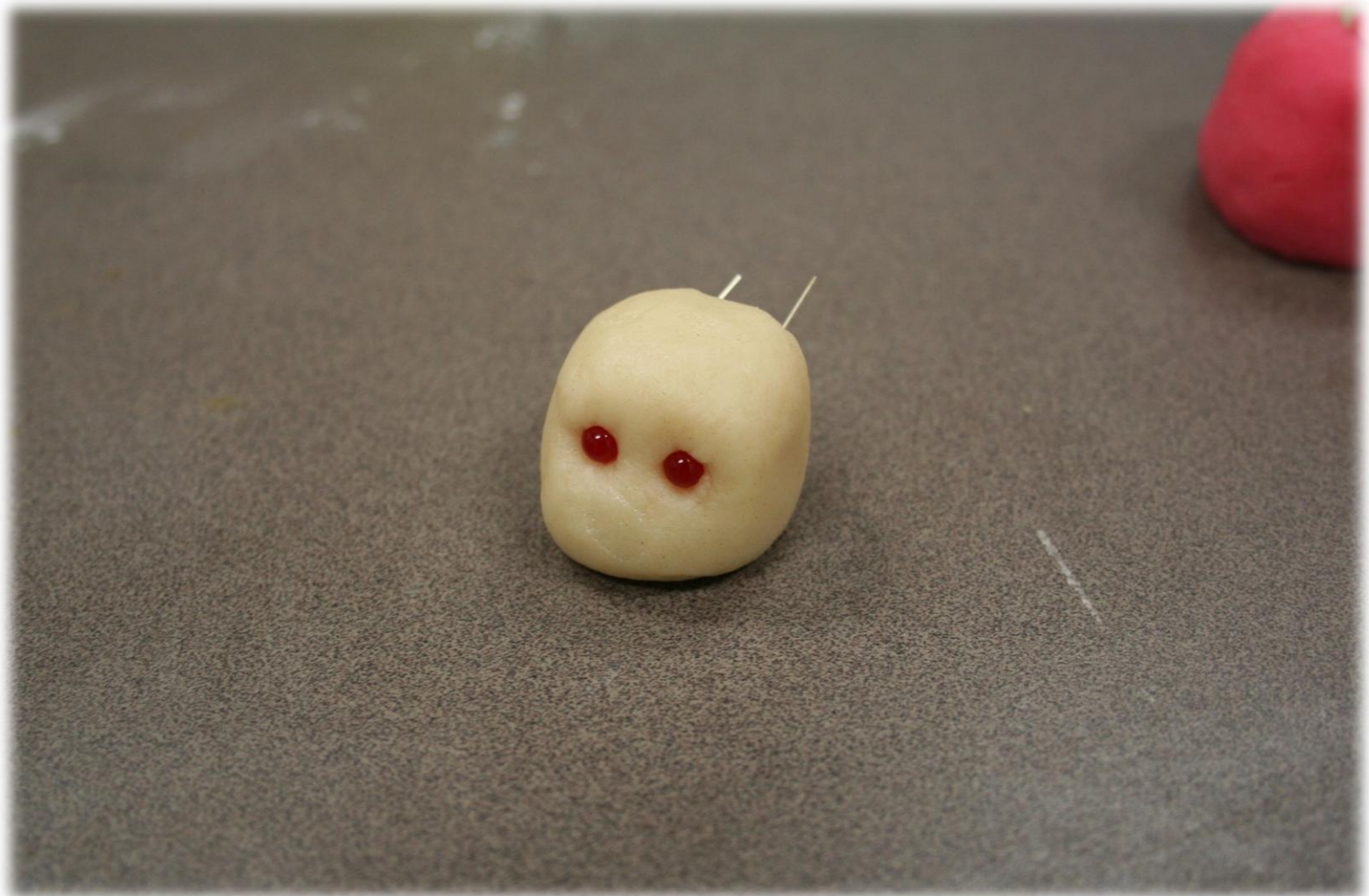
Start with a Lump of Insulating Dough



Cover Entire Surface and One Motor Terminal with Conductive Dough



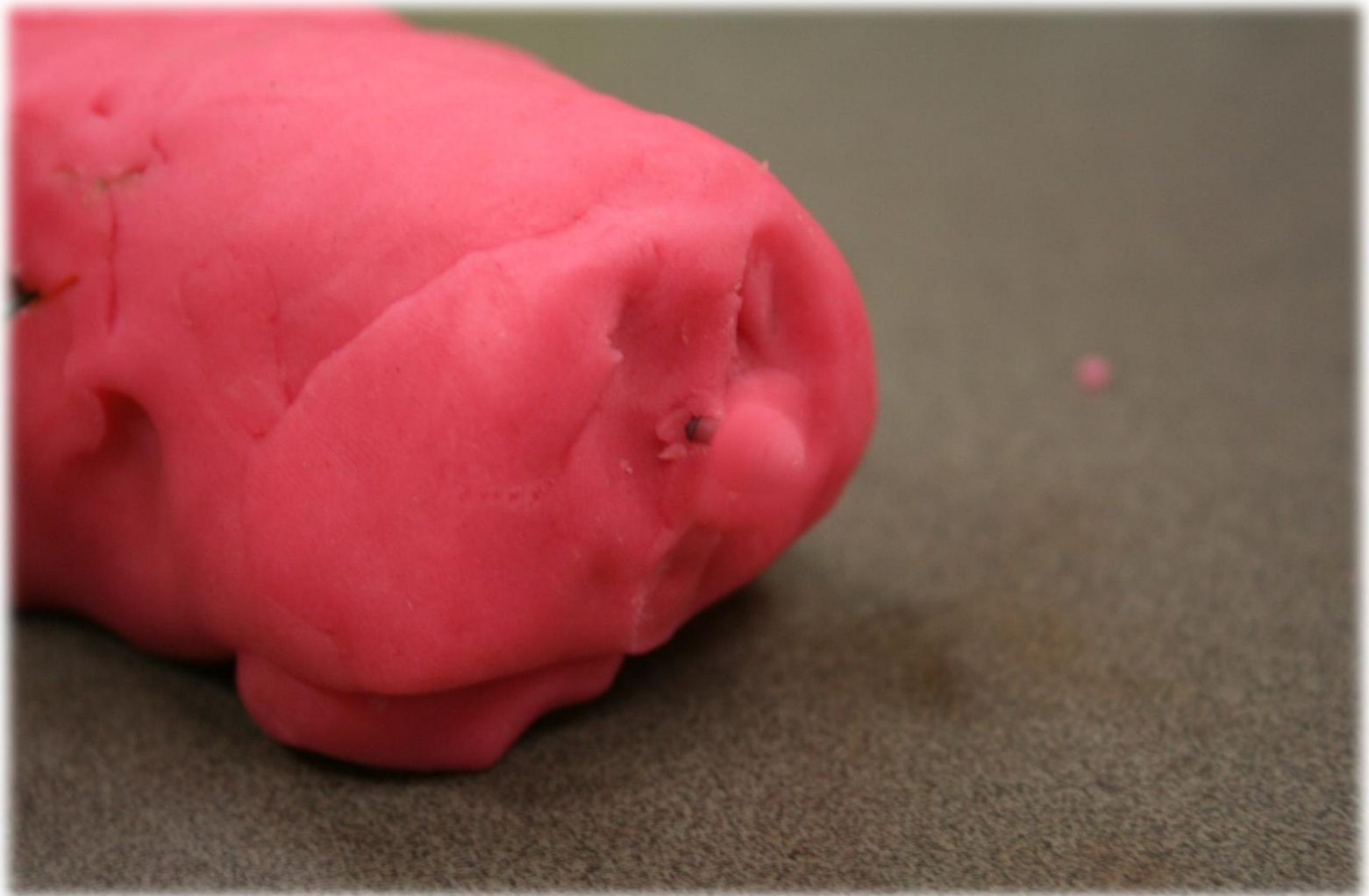
Stick 2 LED Eyes into a Lump of Insulating Dough



Cover the Head with Conductive Dough and Make Sure the Bottom LED's Make Contact with the "Skin". Cover the Other Motor Terminal and Top LED Leads with Another Section of Conductive Dough. Fill the Remaining Area with Insulating Dough and Cover with Conductive Dough.



Attach a Power Source – Spinning Tail



Happy Creating! - Remember that there are many different ways
to build Squishy Circuits!

Make Sure to Share your Creations with Our Facebook Page
(www.Facebook.com/SquishyCircuits)!

